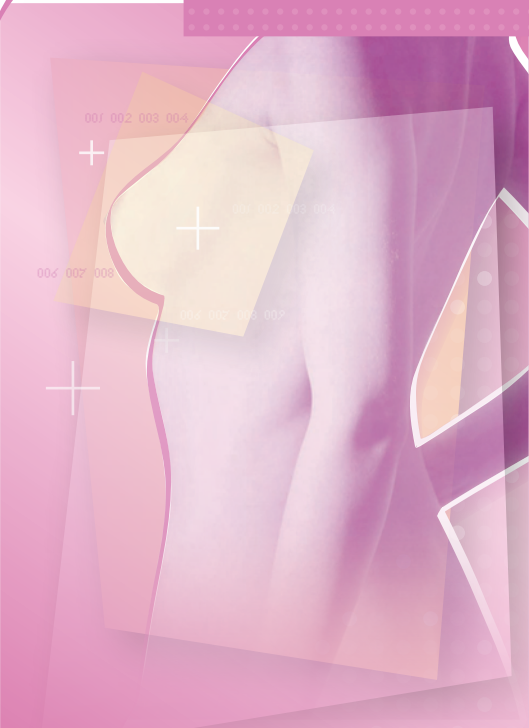


Hong Kong's First
Siemens Digital Mammography

Mammography



In Hong Kong, breast cancer is the No.1 female cancer, and the No.3 among all cancers. The number of breast cancer is ever increasing since 80s. Currently there are more than 1,900 new cases in Hong Kong each year. The peak age for discovering breast cancers is around 50.

1900
new cases of breast cancer each year

Studies have shown that the earlier stage of breast cancer, the greater is the opportunity for it to be cured. Mammography remains one of the most effective ways for detecting early breast cancer.

Recommendations for Screening Mammograms

For women aged 40-49	every 1-2 years
For women aged 50 or above	annually
High risk group with family history of premenopausal breast cancer in a first degree relative or those with a history of breast and / or gynecological cancer	annually

Digital Mammography in DDC

Digital Diagnostic Centre lately introduced the Hong Kong's First Siemens Digital Mammography MAMMOMAT Novation^{DR} system.

- It meets the demands of modern mammography practices by providing screening, diagnostic, and stereotactic biopsy capabilities all in one system.
- Stereotactic biopsy is a non-invasive and accurate method to obtain the tissue sample required for diagnosis.
- The high image quality allows for early detection of the smallest changes in breast tissue.
- It offers the possibility to examine breasts with a shorter exposure time and thus significantly reduced radiation dose.

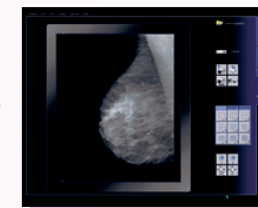


Digital Mammography



How to perform mammogram?

The breast is compressed to flatten and spread tissue. It may be uncomfortable for a few seconds. But the firm pressure is important to have a clear breast picture.



Preparations

- You will be asked to undress to the waist, please wear a two pieces out fit.
- Do not use the bath powder or oil, perfumes, creams or deodorants on the day of visit.



While mammography is one of most effective way for detecting breast cancer, it dose not find all breast cancers. It is important for you to do breast self examination on a regular basis. Please consult your doctor for details.

Enquiry Hotline

2739 3111

Should you have any queries, please feel free to contact our healthcare representatives. We have taken reasonable measures to ensure the information of the pamphlet is correct; however, information is for reference only. Please consult doctor for any update information.

Reference link:

www.ahrq.gov/clinic/uspstf/uspstfbrca.htm
U.S. Preventive Services Task Force

<http://www.cheu.gov.hk/>
Department of Health Central Health Education Unit

SIEMENS
www.siemens.com.hk



DIGITAL DIAGNOSTIC CENTRE

12/F, Oterprise Square, 26 Nathan Road, Tsim Sha Tsui
www.ddchealth.com